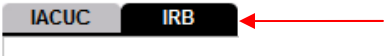


Clone (Copy) a Protocol

- 1) Log in to eProtocol with your CalNet ID & password at: <https://eprotocol.berkeley.edu>
- 2) Click on the **IRB tab** to see your Investigator Homepage for IRB Submissions.



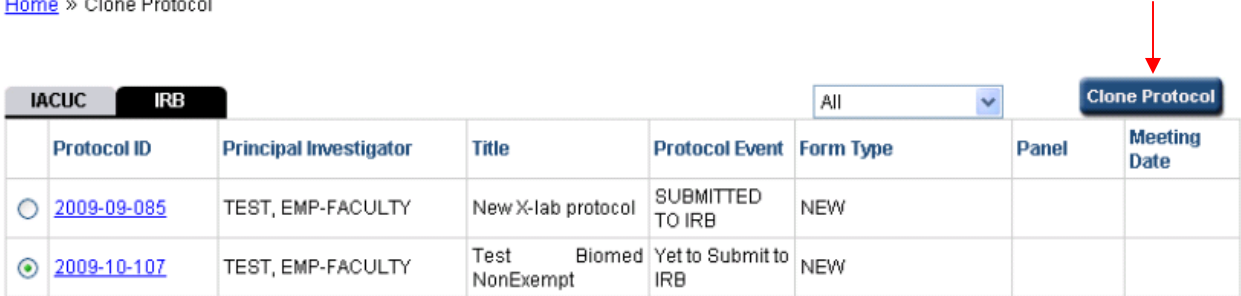
- 3) The protocols that you see on your Investigator Homepage are protocols with pending action. No protocols will be shown if you have not yet been listed as personnel on a protocol in the system. Click on the **Clone Protocol** button.

Click on Clone Protocol

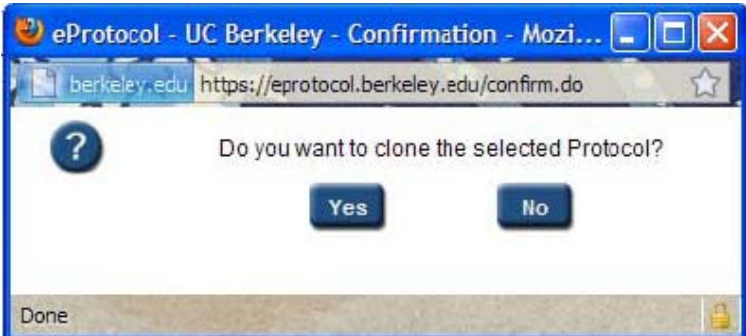


- 4) Select the protocol to clone using the radio button next to the Protocol ID and click on the **Clone Protocol** button.

[Home](#) » Clone Protocol



- 5) Click on the **Yes** button in the popup that appears.



- 6) eProtocol will return you to the Investigator home page and on it will be a note providing the protocol number of the new protocol that was created by cloning the protocol that was selected. For example: [Protocol 2010-01-137](#) is created by cloning the protocol [2009-10-107](#)