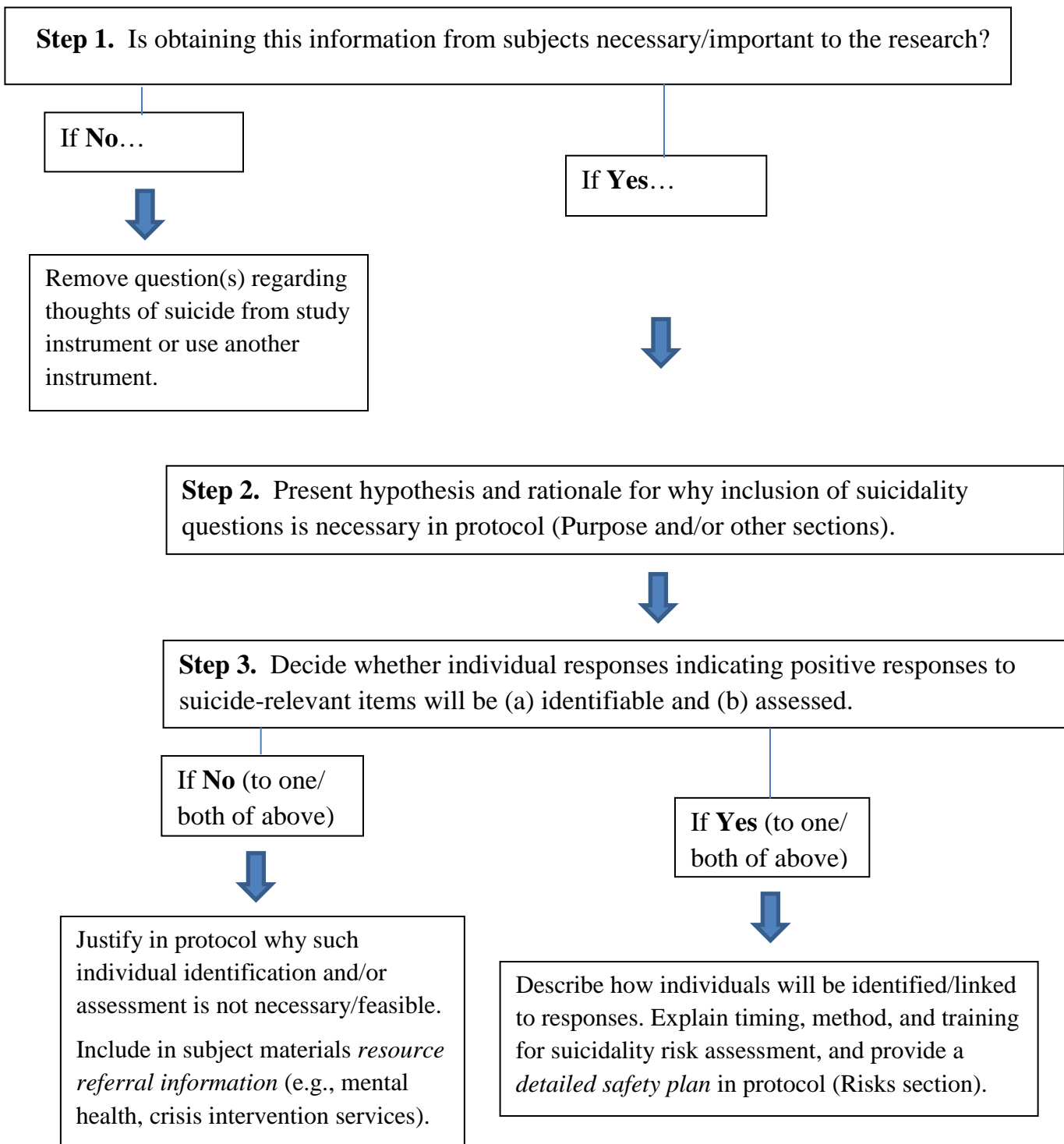


## Decision Tree for Investigators – Whether to Include Questions about Suicidal Ideation in Research



**Note:** For more detail, see [Suicidal Ideation in Protocols](#) guidance. Should you have any questions in this regard, you may contact OPHS staff at [ophs@berkeley.edu](mailto:ophs@berkeley.edu) or 510-642-7461.